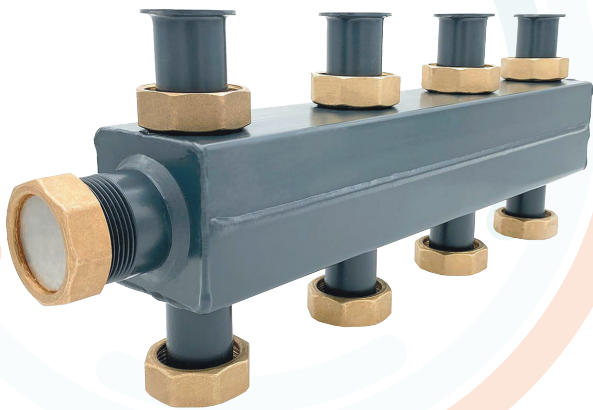


Manifolds



DN 25 - (LDP)

Product description

The LDP (low differential pressure) heating circuit manifold hydraulically decouples the primary from the secondary circuit. If different volume flows result from different generation and consumption structures, the water quantity required to compensate for this is diverted via the overflow valve integrated in the manifold, from the flow to the return chamber or vice versa. A faster shutdown of the heating source is possible and pressure fluctuations in the system (due to sudden closing of the secondary circuits) are reduced.



Technical data | DN 25 (LDP)

Nominal diameter	DN 25
Connection dimensions	1 1/2" Rp
Center distance heating flow and return flow	125 mm
Dimensions (H x W x L)	2+1: 190 mm x 160 mm x 550 mm 3+2: 190 mm x 160 mm x 800 mm
Materials	EPP, brass, steel, EPDM seals
Field of application	140 kW ($\Delta T = 20 K$), up to 100 °C, Kvs 13 m ³ /h, 110kW
Operating pressure	max. 6 bar