

Pressure boosting system APS-A



Product advantages

- Compact design: The pump is equipped with a pressure tank, a flow switch and a mechanical pressure switch
- Automatic control and regulation of the water flow through integrated pressure tank, pressure switch and flow control valve
- Reduced operating noise level
- Dry-running protection: Pump switches off automatically if there is no flow at the pump inlet for 6 minutes. After the water flow is restored, the pump restarts automatically

Technical data

APS | 55-A

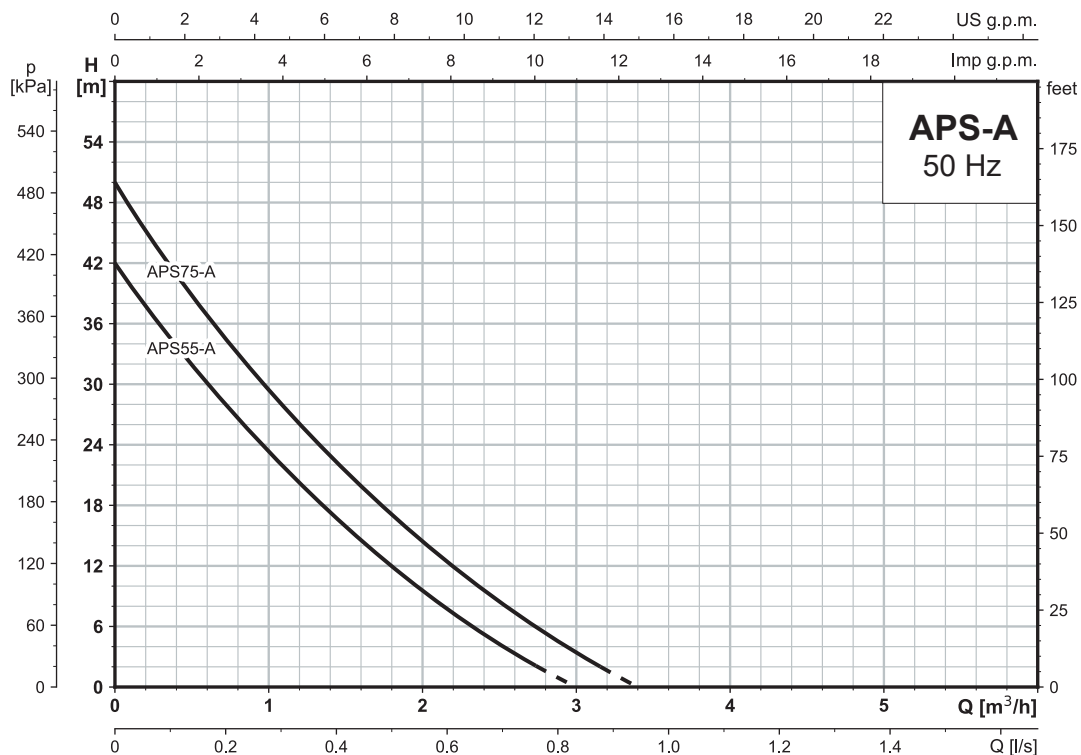
| 75-A

Max. head (m)	42	50
Max. Flow (m ³ /h)	3	3.4
Max. suction head (m)	8	8
Power P2 (kW)	0.55	0.75
Supply voltage	1x230V, 50Hz	1x230V, 50Hz
Protection class	IPX4	IPX4
Ambient temperature	40	40
Fluid temperature	90	90
Max. system pressure	5	5
Insulation class	Class B	Class B
Pump housing material	cast iron	cast iron
Impeller material	brass	brass
Cable	1.5m Length incl. protective power plug	1.5m Length incl. protective power plug

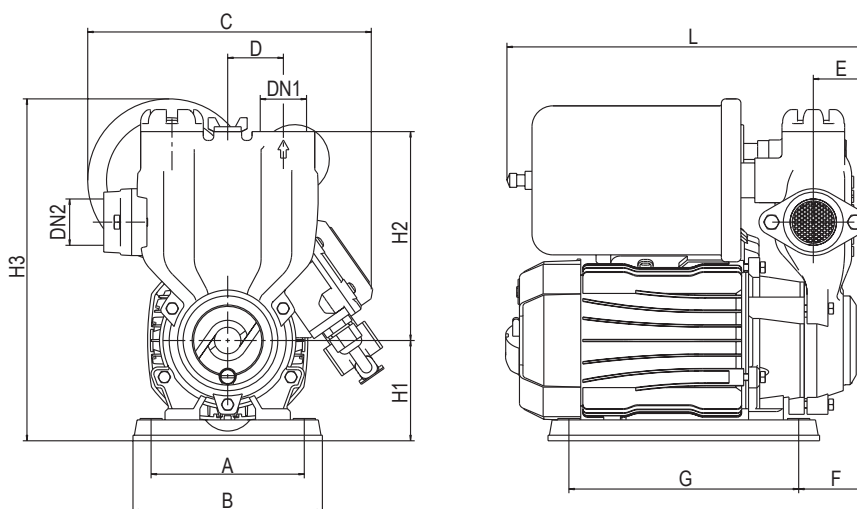
Article No
| P OP340 7463

Article No
| P OP340 7464

Hydraulic characteristics



Dimensions and Weight



Model	Connections		Dimensions (mm)											Weight (kg)	
Single-phase	DN1	DN2	A	B	C	D	E	F	G	L	H1	H2	H3	N.W.	G.W.
APS55-A	1"	1"	132	160	212	50	39	41.5	190	268	84	170	285	11.4	12.1
APS75-A	1"	1"	132	160	212	50	39	41.5	190	268	84	170	285	13.1	13.8